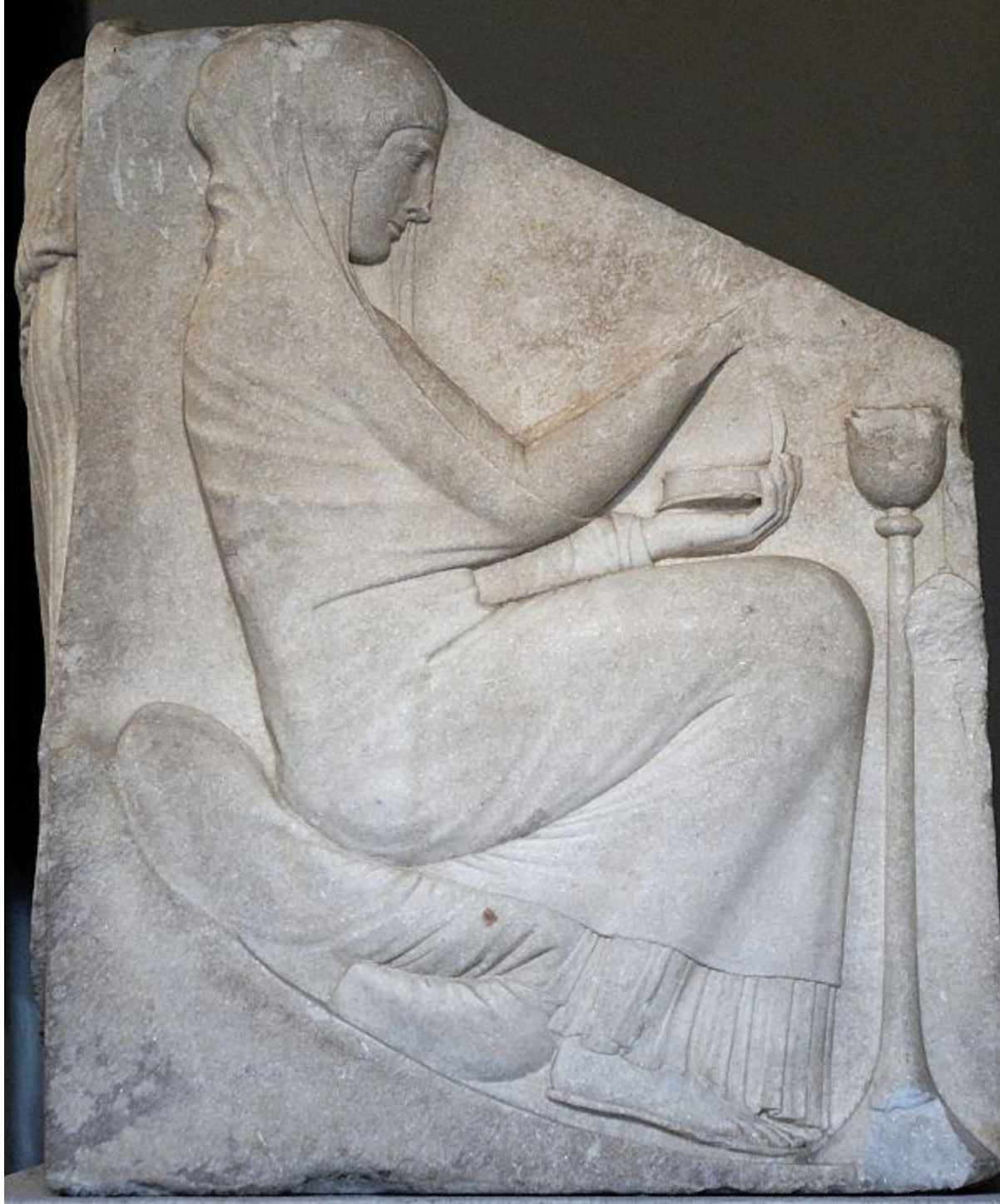




Main panel: "Aphrodite rising from the sea".



Left-hand panel: a naked woman playing the *aulos*



Right-hand panel: crouching veiled woman offering incense

The Ludovisi Throne is an ancient sculpted block of white marble hollowed at the back and carved with [bas-reliefs](#) on the three outer faces (**it is not actually a throne for sitting on**). Its authenticity is debated; the majority, who accept it, place it as [Western Greek](#), from [Magna Graecia](#), and date it—; from

the **Severe style** it manifests, transitional between **Archaic** and Early Classical—; to the period about 460 BCE.

The central relief is most customarily read as **Aphrodite** rising from the sea, a motif known as **Venus Anadyomene** (height 0.9 m, length 1.42 m). The goddess, in clinging diaphanous draperies, is helped by two attendant **Horae** standing on the shore, who prepared to **veil her with a cloth** they jointly hold, which hides her from the waist down. The two reliefs on the flanking sides discreetly turn their backs to the mystery of the central subject. The right relief shows a crouching **veiled** woman who offers incense from a *thymiaterion* held in her left hand, in an incense burner on a stand. The right slab's dimensions are height 0.87 m, length 0.69 m. The other shows a young nude girl, seated with one knee thrown over the other^[1] who plays the double flute called the *aulos*; her hair is bound in a **kerchief**. The dimensions of the left slab are height 0.84 m, length 0.68 m.

Number:

100

Material:

Parian marble

Location of Original:

Rome, Terme National Museum 3

Size:

1.04m

Accession:

From Malpieri of Rome

References:

Lippold: Griechische Plastik, 118 (n.14), pls. 42.1, 43.1&4

Richter: Sculpture & Sculptors of the Greeks (1950), 169, figs.474-6

Paribeni: Catalogue of Greek Sculpture of the 5th Century BC in the National Museum (Terme), Rome (1953), 12

Colin, G: Revue Archéologique 25 (1946), 23-, 139-

Rhys Carpenter: Memoirs of the American Academy in Rome XVIII (1941), 41-, pls. 17-19

Date:

c.460 BCE

Provenance:

Found in 1887.

Villa Ludovisi, Rome